



COMPANY PROFILE



2025

SWEET CRUDE ENERGY LIMITED is an accredited Oil Field Industrial Services Company with specialty in Mechanical, Engineering Design, Engineering Civil Works/Construction & Maintenance, Welding & Fabrication Services, as well as Perimeter fencing & Painting of corrode Pipeline/Flow line and fittings, Pipeline Flowline Sectional Replacement in both upstream/downstream sectors of Oil and Gas industry in Nigeria.



A Brief Story About The Company



ABOUT US



SWEET CRUDE ENERGY LIMITED is an indigenous company. She is registered in Nigeria with the Nigerian Corporate Affairs Commission with RC1872119. She however has a global reach and is positioned to navigate the new normal in a post Covid world, delivering what matters most: safety, efficiency, reliability, sustainability in carrying out various energy and engineering based project works onshore and offshore.

With a committed workforce of certified engineers, highly trained technicians and a proficient managerial team having a combined experience base of more than two (2) decades, **SWEET CRUDE** is well positioned and equipped with the relevant skills, knowledge base and technological expertise to carryout end to end delivery of multisector projects.

VISION

Provide solutions to the Engineering, Energy and Service sectors for a greater and higher yield through consistent improvement in R&D.



MISSION

To be a company known for excellence in customer satisfaction, product and service delivery to our various end-users whilst maintaining sustainable development program with best International Safety and Environmental practices as a core requirement

OUR PREMIUM VALUE

Here are the pillars on which we ride and excel:

Team Spirit: Togetherness is what makes us stand out as a company.

Research: Study and research is part of our growth and development processes.

Innovation: A continues move to excellence

Tenaciousness: Always focused in our course of action, principle and determined

As a company, we pride ourselves in getting the job done within project schedule and cost; saving our clients a lot of pressure and downtime. The tenets central to accomplishing our mission and realizing our vision stems from our premium Values. We however are also:

- Interested in building relationships that transcends the job environment and business workplace.
- Maximizing our effectiveness and team efforts in winning and retaining our customers by applying strategic service strategies using well-structured approaches.
- Deepening customer trust through the quality of our products and services, Our responsiveness and accountability, and our predictability and reliability in everything we do



OUR PROFESSIONAL SERVICES

Our services are designed to support our customers by offering technological solutions at an affordable cost. What is more is that we understand our client's needs, hence our approach is to use a scalable program that suits your need, and we always keep to our word.

01

MECHANICAL INSTALLATION AND MAINTENANCE

we install and follow through with the maintenance and service repair of different mechanical equipment. We service and also repair both hydraulic and pneumatic pumps to their normal working conditions. Repairs may include repairing, adjusting, and replacing any component or equipment part. As part of these operations, we carry out welding, which is a process of bring parts together to produce/develop something new. It could metal, glass, or thermoplastics with similar melting points and compositions using fusion. Other aspects of our mechanical maintenance works includes fabrication works, pipelines, valves, fittings repairs, rehabilitation, blasting, & coating, equipment repairs, upgrade and much more.

02

ELECTRICAL INSTALLATION AND MAINTENANCE

Power is a very important component that ensures operational productivity in many organizations. It therefore becomes important to us to control the outcomes associated the generation, supply, distribution and maintenance of power and her equipment. We are proficient in the installations electrical switch gear and MCC package supply, electrical system engineering & design, electrical startup and commissioning services. Our focus is to control the outcomes and reduce the occurrence of risks within the work place.


03

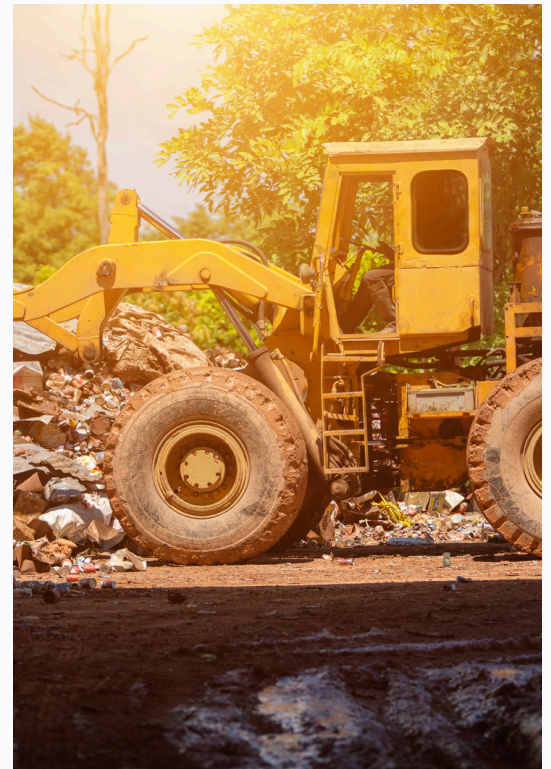
CIVIL INSTALLATION AND MAINTENANCE

We carry out civil engineering works and maintenance. We are concerned with creative use of engineering principles and science to shape and improve our lives and our environment. Our work follows a defined approach that fosters development while ensuring structural efficiency and safety.


04

PROCUREMENT & EQUIPMENT SOURCING

Over the years, we have built a support service of trade partners and OEMs that fosters an atmosphere of ease in our sourcing and procurement roles. We also ensure that procured tools & equipment's are delivered to the site of our clientele using our in-house logistic pillars.


05

WASTE MANAGEMENT

Our Waste management systems provide end to end treatment and disposal of waste. Our management process provides expert services around the detoxification of harmful waste. Since we are an environmentally friendly organization, we strive to maintain a culture of growth that is green. Our waste services includes but not Industrial, Commercial, Domestic, and Agricultural Wastes.



06 MARINE SERVICES'

We provide a range of related services for the maritime sector comprising going vessels and offshore installations. Our services include.

- Barges/boats building construction
- Maritime inspections - Hull gauging and thickness measurement
- Dredging, leasing of marine equipment
- Boiler pressure vessel inspection
- Port Handling and Clearance
- Rig condition survey
- Marine rescue and Crisis management

Our priority is to proffer long lasting solution to our esteemed customers/clients, protection, preservation of our workforce, assets, environmental health, safety and security of the work place.

07 DRILLING FLUIDS & CHEMICALS'

We offer a comprehensive range of drilling and completion engineering services & studies to help optimize your projects and create value by drilling fit-for purpose wells linked to the subsurface needs and surface capacity and constraints.

Our teams have a broad range of experience in the design and maintenance of complex wells in different geographical locations.

We can assist you with specific topics such as casing design, cement design, drilling and completion fluid design, OCTG metallurgy, hydraulic fracturing operations support and advanced geo-mechanics. We can also provide independent evaluations and audits in compliance with well-established standards, rules and (or) guidelines applicable to the oil and gas industry.





HSE POLICY AND QUALITY MANAGEMENT:

Regardless of the cost and constraints of project schedule, HSSSEQ is our core value on projects and facility design. At SWEETCRUDE, we don't tolerate inhibitors to HSSEQ process & Effective Service Delivery. Our policy is tied to

- Completely eliminating ACCIDENT of ANY NATURE.
- To ensure safety and compliance in the work place
- To achieve ZERO fatality.

Quality Assurance

SWEETCRUDE ENERGY LIMITED regularly conduct quality checks on all materials and goods supplied for clients' job operation, to ensure; newness, free from defect and compliance to quality standards.

For this sole purpose this company has in it crew of staff, an experience senior quality control personnel in a team of others, to do these regular checking; in present of the client's representative.

Safety Declaration

SWEETCRUDE ENERGY LIMITED has as it most prime interest in all its projects, SAFETY and ENVIRONMENTAL PROTECTION. Thus, in all its operations, safety roles are always demonstrated in full.

All persons working in the services of SWEETCRUDE ENERGY LIMITED shall be confirmed medically fit before commencement of job, and through the contract duration.

We are willing to present certificate of medical fitness of all personnel and ensure that all personnel are client certified swimmers.

Work Plan on PPE

Supplies of personnel protective equipment (PPE) shall be made adequate.

Physical and mechanical safety guards shall be provided to protect workers from hazards associated with their respective job types and from weather conditions whenever the need arises.

This PPE distribution and replacement are monitored and documented.

ENVIRONMENTAL POLICY

It remains the sole responsibility of every SWEETCRUDE employee to perform his/her work in an environmentally friendly and sound manner. It is also the policy of SWEETCRUDE ENERGY LIMITED to strongly promote and encourage awareness of and to protect and preserve the environment. Hence, to properly execute these policies, staff are advised to pay proper regard and be very observant in the working environment by acting to preserve; air, soil, plant, water and animals from the destructive effect of their actions and greatly reducing any form of nuisance which may arise from their actions on site.

It is the policy of this company to collect all waste generated during the project, these waste are treated and disposed in such a way as not to create any impact on the environment. Regular inspection are been conducted by our environmental-quality control consultants to ensure compliance with environmental standards.

LOCAL CONTENT POLICY:

All our projects must be in compliance with the Nigerian Content Development and Monitoring Board (NCDMB) and all fabrications, designs and personnel are locally made and sourced.

To engage the services of the Nigerian populace and our resource persons are locally sourced and trained.

We aim to maximize our human and other resources available at our disposal in the oil and gas sector locally.



OUR PROJECTS AND PRODUCTS

SWEETCRUDE ENERGY LIMITED has successfully completed and delivered products and services across various organizations, as such gained a reputation in the oil and gas sector for our timely delivery of quality and standard projects to our highly esteemed client.

We collaborate with other multi-nationals in the various sectors for effective and efficient service delivery when the need arises.

THANK YOU

For more information, please contact
us today through our official channels



KM 15 International Airport Road Rumuodomaya,
Port Harcourt
Rivers State.



+234 8134 604 640



info@sweetcrudeenergyng.com



www.sweetcrudeenergyng.com

